

METALS and NON - METALS

The Periodic Table of Elements

Group 1																	Group 18
1	2											13	14	15	16	17	18
1 H Hydrogen												5 B Boron 11	6 C Carbon 12	7 N Nitrogen 14	8 O Oxygen 16	9 F Fluorine 19	10 Ne Neon 20
2 3 Li Lithium 7	4 Be Beryllium 9											13 Al Aluminium 27	14 Si Silicon 28	15 P Phosphorus 31	16 S Sulfur 32	17 Cl Chlorine 35,5	18 Ar Argon 40
3 11 Na Sodium 23	12 Mg Magnesium 24	3	4	5	6	7	8	9	10	11	12	31 Ga Gallium 79	32 Ge Germanium 73	33 As Arsenic 75	34 Se Selenium 79	35 Br Bromine 80	36 Kr Krypton 84
4 19 K Potassium 39	20 Ca Calcium 40	21 Sc Scandium 45	22 Ti Titanium 48	23 V Vanadium 51	24 Cr Chromium 52	25 Mn Manganese 55	26 Fe Iron 56	27 Co Cobalt 59	28 Ni Nickel 59	29 Cu Copper 63,5	30 Zn Zinc 65	49 In Indium 115	50 Sn Tin 119	51 Sb Antimony 122	52 Te Tellurium 128	53 I Iodine 127	54 Xe Xenon 131
5 37 Rb Rubidium 86	38 Sr Strontium 88	39 Y Yttrium 89	40 Zr Zirconium 91	41 Nb Niobium 93	42 Mo Molybdenum 96	43 Tc Technetium (98)	44 Ru Ruthenium 101	45 Rh Rhodium 103	46 Pd Palladium 106	47 Ag Silver 108	48 Cd Cadmium 112	81 Tl Thallium 204	82 Pb Lead 207	83 Bi Bismuth 209	84 Po Polonium (209)	85 At Astatine (210)	86 Rn Radon (222)
6 55 Cs Caesium 133	56 Ba Barium 137	57-71 La Lanthanum 139	72 Hf Hafnium 179	73 Ta Tantalum 181	74 W Tungsten 184	75 Re Rhenium 186	76 Os Osmium 190	77 Ir Iridium 192	78 Pt Platinum 195	79 Au Gold 197	80 Hg Mercury 201	113 Nh Nihonium (286)	114 Fl Flerovium (289)	115 Mc Moscovium (290)	116 Lv Livermorium (293)	117 Ts Tennessine (294)	118 Og Oganesson (294)
7 87 Fr Francium (223)	88 Ra Radium (226)	89-103 Ac Actinium (227)	104 Rf Rutherfordium (267)	105 Db Dubnium (268)	106 Sg Seaborgium (269)	107 Bh Bohrium (270)	108 Hs Hassium (277)	109 Mt Meitnerium (278)	110 Ds Darmstadtium (281)	111 Rg Roentgenium (282)	112 Cn Copernicium (285)	113 Nh Nihonium (286)	114 Fl Flerovium (289)	115 Mc Moscovium (290)	116 Lv Livermorium (293)	117 Ts Tennessine (294)	118 Og Oganesson (294)

Most non-metals are found on the right hand side of the periodic table.

ELEMENTS

are divided into two main types: metals and non-metals.

Non-Metals
Metals

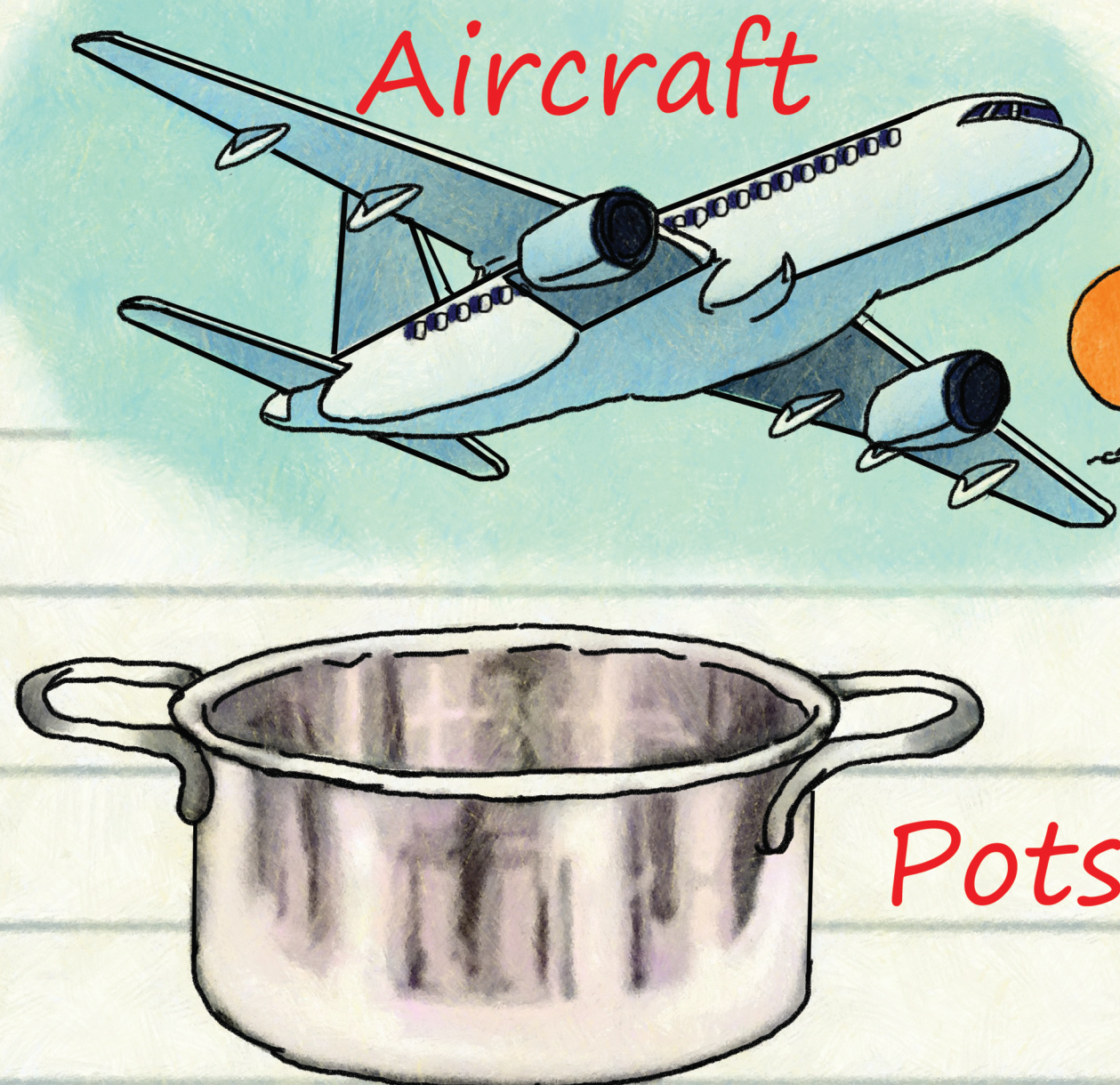
Most elements are metals and are found on the left hand side of the periodic table.

Metals and non-metals have different properties and uses.

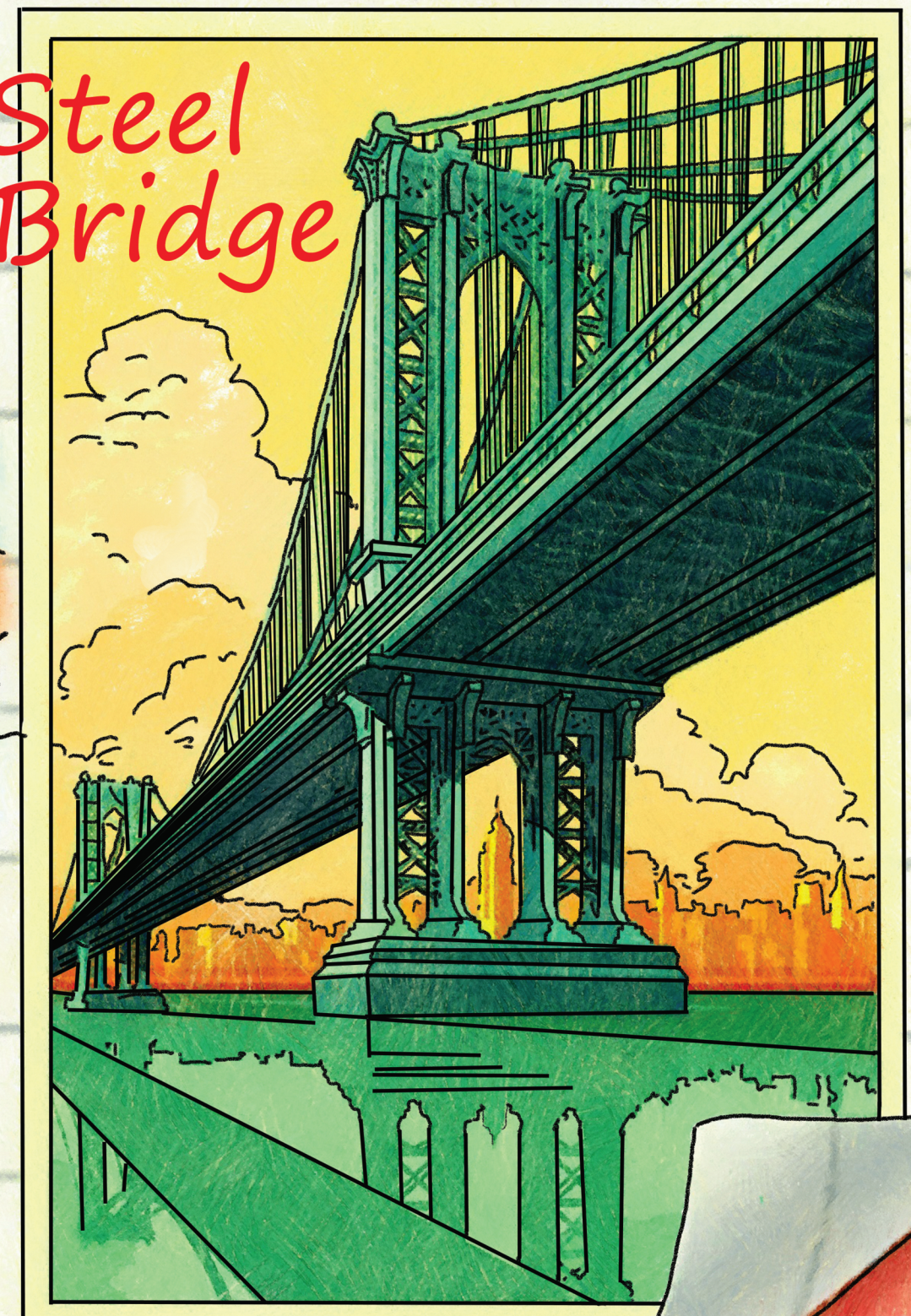
METALS

- High melting points
- Good conductors of electricity and heat
- Can be easily shaped
- Strong and flexible

Examples of metals



Steel Bridge



NON - METALS

- Dull and can be brittle
- Bad conductor of electricity and heat
- Solid, liquid or gas

Examples of non-metals

